

*Local Holiday*

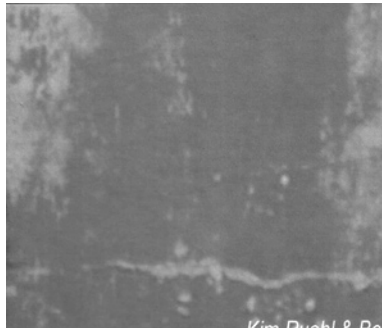
**BELTAINE: WINTER WIND**  
www.beltainemusic.com



Winter Wind is a beautiful journey through the history of Christmas music, spanning the globe from the 13th century to the present. The bright and festive sounds of acoustic guitar, hammered and mountain dulcimer, marimbula, flute, and penny whistle combine in folk inspired arrangements, with dance-like qualities and a celebratory air throughout. Brian Baker's guitar work shines, with gorgeous solos in "What Child is This," "The Wassail Song" and "Baloo Lammy." The sweet, clear dulcimers and the dulcet tones of the flute and penny whistle offer a gentle touch to these winter songs. The care that went into the execution and arrangements of the music is also apparent in the packaging, with a lovely, tranquil painting by Eileen George gracing the cover, and thorough liner notes sharing a brief history of each song. The repertoire is mostly familiar songs of the season, with a few that are less well known, such as "Up on the Housetop," a 19th century American tune, and "There Comes a Galley, Laden" from 14th century Germany. The delightful musical surprises that leap out of well-worn songs help keep this CD from adding to the glut of overplayed mall music. The touch of the major mode in "What Child is This" adds a distinctly Renaissance lift to the end of the tune. "Jingle Bells" springs out of the traditional Scottish song "Mari's Wedding" with upbeat syncopated rhythms. Brian Baker, Kris Chase, and John Keys, the talented musicians that are Beltaine, hail from Portland, and perform in concerts and at festivals throughout the Northwest. Winter Wind, their third CD, is a wonderful way to add brightness and warmth to the holiday season. (Hilary Field)

*Local Jazz*

**KIM RUEHL & BETA MAX:**  
**BETTER LATE THAN NEVER**  
self issued; www.betamax.com



Street poet meets new age/old time music in *Better Late Than Never* by Kim Ruehl and BetaMax. There is an experimental free form flow to the songs on this CD; not quite jazz yet with that feeling. A sort of contemporary beatnik style, lyricist Kim Ruehl takes the lead while Karen Lindenberg provides the vocal harmony as well as keyboards with Dean Luce on mandolin, guitar and accordion assuming the third point of the triangle. Navigating the city streets and the metaphors that can be found while strolling through life are contemplated in "Siren Song." "Risk" has a broadness to it that seems to float about on clouds of sustained sounds, clearly a work in progress. "Darkness" captures the essence of the deep recesses of the word itself as it spirals downward. Free-spiritedness celebrates "Right of Way" with some tasty mandolin work by Luce. It's always nice to share the innocence of up and coming artists as they test the waters of performance art and this recording is a nice first effort. (Nancy Vivolo)

*Local Sea Songs*

**WILLIAM PINT AND FELICIA DALE:**  
**THE SET OF THE SAIL**  
Waterbug records – info@waterbug.com  
www.waterbug.com or www.pintndale.com



William Pint and Felicia Dale keep traditionals current on their 8<sup>th</sup> CD *The Set Of The Sail* -a beautiful and thoughtful collection of French traditionals combined with recently written sea songs and shanties of old. Pint and Dale's gorgeous harmonies and arrangements are authenticated by the hurdy-gurdy, pennywhistle and personal connections to the sea. In fact, *The Set Of The Sail* is dedicated to the memory of Felicia's father, Captain E. L. Dale, who was a sailor most of his life and brought back to his family tales and treasures from ports far away. Felicia's mother was Paris-born and raised her daughter on Vashon Island, where Felicia spent her early years sailing the waters of the Northwest and learning the French songs of the seafaring tradition. William Pint - a fan of The Kinks, The Beatles and The Who - found his way to traditional music via British folk groups. Some of the harmonies on *The Set Of The Sail* are evocative of Fairport Convention. Pint left his Wisconsin home in 1977 to study music and ended up in the Pacific Northwest where he was led to explore the songs of the deep water sailors. In 1979 he recorded an album of Irish tunes for Folkways Records with his band Morrigan. Pint and Dale sing with an emotional intensity that brings the stories in these songs to life. They've done their homework too. The song choices and combinations are thematically unified and make listening to *The Set Of The Sail* very satisfying. They include: "Fanfare/Go From My Window/Northern Tide/Out On The Ocean," "Adieu Les Filles De Mon Pays," "Jack Tar Ashore," "The Handsome Cabin Boy," and according to the liner notes, Henry David Thoreau's favorite song "Tom Bowling." If you want to sail the seven seas from the comfort of dry land, it's easy enough to do with *The Set Of The Sail*. (Heidi Fosner)

*Local World*

**FOOLS IN PARADISE:**  
**THE OTHER SIDE OF THE SKY**  
www.FoolsInParadise.com

